



Education

# Prices and Dates 2024

Schools in the UK,  
USA, Canada,  
Australia, New  
Zealand, France  
& Switzerland



[www.global-edu.com.mx](http://www.global-edu.com.mx)



# The Experience

"Hampstead provided an excellent environment to learn English and have fun. It was one of the best experiences of my life."

GABRIELLA ILLÉS, TV PRODUCER, HUNGARY

1

## Your programme starts at home



With E-L you can access learning materials and start your academic programme as soon as you book.

2

## A warm welcome upon arrival



You will arrive to a warm welcome from your host family or at your residence to make sure you are comfortable and get fully settled.

5

## Continuous appraisal



We continuously monitor your progress through a regular system of testing and customised learning plans. Through E-L you can access your academic information, including test scores and tutorial reports.

4

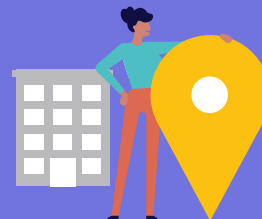
## First day in school



Our friendly staff will explain everything you need to know about your programme. You'll have a thorough skills test to ensure that we place you into the right class, we'll introduce you to our cultural and social programme and we'll ensure that you meet all your classmates and the school staff.

3

## Orientation in the school



6

## Clear and substantiated progress



Entry tests and exit tests, along with regular appraisal from our academic staff show you how much progress you've made during your programme.

7

## Graduation ceremony



In the graduation ceremony, you'll receive your graduation certificate and celebrate your programme with your new friends

\* Not available in all centres. Please check with the school at the time of booking

# Aprende inglés con GLOBAL en Vancouver



**GLOBAL Vancouver**  
**806 Homer St., 2<sup>nd</sup> floor**  
**Vancouver, BC V6B 2W5**  
**Informes e inscripciones: +52 55 5401-5202**  
**info@global-edu.com.mx**

Vancouver es una ciudad deslumbrante y moderna, situada entre montañas y bosques frondosos y el Océano Pacífico – un destino realmente impresionante para toda persona que quiera estudiar inglés en Canadá.

Nuestra escuela de inglés se encuentra en pleno centro de Vancouver, a poca distancia a pie de todos los principales lugares de interés y servicios de transporte. Sus instalaciones incluyen sala con computadoras con acceso a Internet, biblioteca de material autodidáctico y un salón para los estudiantes, contribuyendo a hacer de GLOBAL

Vancouver un ambiente cómodo y acogedor en el que estudiar inglés. Ofrecemos cursos de preparación para TOEFL y Exámenes de Cambridge (CAE), así como programas de inglés como segunda lengua más generales.

El siguiente es un ejemplo de cómo podrás disfrutar de tu “tiempo libre”. Las actividades de “tiempo libre”, pueden variar por el clima y otras causas fuera de nuestro control.

	Lunes	Martes	Miércoles	Jueves	Viernes	Sábado	Domingo
Week 1	Clase de baile hip hop	Lazertag	Noche de karaoke	Visita estacional al mercado	Jardín tropical interior del Invernadero Bloedel	Excursión de fin de semana a la estación de esquí Whistler	Excursión de rafting fluvial
Week 2	Cena internacional de lo que haya	Galería de Arte de Vancouver	Barbacoa de verano y festival de deportes	Visita estacional al mercado	Comedia en Yuk Yuk's	Excursión de fin de semana a la estación de esquí Whistler	Excursión en bicicleta
Week 3	Karaoke hip hop	Ballet del Cascanueces	UBC Canopy Walkway	Espectáculo de baile contemporáneo del Ballet BC	Acuario de Vancouver	Excursión de fin de semana a la estación de esquí Whistler	Excursión de senderismo
Week 4	Patinaje sobre hielo	Escalada bajo techo en Cliffhanger	Encuentro de hockey de los Giants	Clase de baile hip hop	Cirque du Soleil	Excursión de fin de semana a la estación de esquí Whistler	Excursión de rafting fluvial





## Horario de Clases\*

	Lessons 1 & 2* 09:00 – 10:40	Break 10:40 – 11:10	Lessons 3 & 4* 11:10 – 12:50	Lunch 12:50 – 13:40	Lessons 5 & 6* 13:40 – 15:45
<b>MONDAY</b>	General 20				
	Intensive 24				
	Intensive 30				
					Afternoon 10
<b>TUESDAY</b>	General 20				
	Intensive 24				
	Intensive 30				
					Afternoon 10
<b>WEDNESDAY</b>	General 20				
	Intensive 24				
	Intensive 30				
					Afternoon 10
<b>THURSDAY</b>	General 20				
	Intensive 24				
	Intensive 30				
					Afternoon 10
<b>FRIDAY</b>	General 20				
	Intensive 24				
	Intensive 30				
					Afternoon 10

\*El horario de clases está sujeto a cambios por el volumen de estudiantes.



# Vancouver (\$CD)

www.global-edu.com.mx

## General/Academic/English for Specific Purposes

No. of weeks. Prices p/wk	ACADEMIC TERM ABROAD		ACADEMIC YEAR ABROAD	
	1-3	4-11	12-23	24+
Afternoon 10 <sup>^</sup>	215	210		
General 20	410	400	390	370
Intensive 25	455	445	435	405
Intensive 30	495	485	475	445
Academic English 30 Pathway Programme			475	445
Business English 30 <sup>&gt;</sup>	495	485	475	445
TOEFL 30/IELTS 30 <sup>&gt;</sup>	495	485	475	445
No. of weeks. Course Prices		8	10	12
Cambridge 30 Exam Preparation		3900	4880	5735
One to One Lesson price p/lesson				105
Plus Courses Supplement 5/10 lessons				525/1050

<sup>^</sup> Not available on a Student Visa.<sup>></sup> Options also available as I25.

## Premium Courses

One-to-one				
No of lessons p/wk:	20	30	40	50
Course price	2100	3150	4200	5250

Mini Group (Business/General English/Exam Prep)				
No of lessons p/wk:			20	30
Course prices		1 wk	1180	1565
		2 wks	1055	1385
		3 wks	1000	1335
		4+ wks	975	1305

9 Day Compact	No of lessons:	82	92
Course price		9040	10140

## Club 40+ Experience

Per person, p/wk	
3 activities supplement	400

Please note that these activities are supplementary and exclusively for students aged 40+. This programme needs to be booked in addition to the G20 (mixed-age classes of 16+).

## Additional Costs

EXAM FEES	
B2 First/C1 Advanced/C2 Proficiency	Contact LSI Vancouver
OTHER FEES	
Registration fee	175
Textbook (Cambridge Exams)	90
Courier fee	115
Health insurance p/wk	35
Airport transfer one way	130

## Accommodation

Placement fee		215
HOMESTAY (Prices per person p/wk)	B&B	HB
Single room	245	280
Twin room*	230	270
Supplements		
Special diets B&B/HB		30/50
Summer (Jun 16 - Aug 25)		80
Christmas		55
U18 Supplement		25
Executive room private bathroom (en-suite or sole use)*		85
RESIDENCE (Prices per person p/wk)		
YWCA Residence		
Single room, shared bathroom		from 770
Double room, private bathroom†		from 575
Summer Supplement (May to Sep)		125

† \$220 Non-Refundable move in fee charged.

Please note that accommodation prices are subject to changes throughout the year. It is important to contact LSI Vancouver to confirm the prices at the time of your exchange programme.

Arrival and departure dates for Homestay: Saturday to Saturday or Sunday to Sunday.

\* Please check availability.

\* When two students book for the same start and end date.

## Other accommodation options available

## Additional Course Information

Class size: Max 17 students.

Lesson duration: 50 min (50 min for Premium Courses).

### General Courses & English for Business

Start dates for Elementary to Advanced levels: Every Monday.

Start dates for Beginner level: Jan 8, Apr 8, Jul 2, and Sep 30.

### Academic English/TOEFL & IELTS

Start date: Every Monday.

Recommended start dates first Monday of January, April and September.

Exams are provided by third parties. For exam prices &amp; test-centre locations, please contact LSI Vancouver.

### Pathways/Academic Term Abroad (ATA)/Academic Year Abroad (AYA)

Start date: First Monday of January, April and September.

Start dates: B2: Mar 18 - 12 wks, Jul 2 - 8 wks, Sep 9 - 12 wks

C1: Mar 18 - 12 wks, Jul 2 - 8 wks, Sep 9 - 12 wks

Please be advised that classes availability are depending on demand.

Exam dates: B2 First: Jun 4, Aug 22 &amp; Nov 26

C1 Advanced: Jun 5, Aug 23 &amp; Nov 27

All exams are paper based.

Please be aware that all dates are subject to change at short notice based on demand. To obtain further information, please contact the school directly.

### Premium Courses

Start dates (one-to-one, Mini Group): Every Monday.

Start dates (9 Day Compact): Every Saturday.

### Club 40+ Experience

Start dates: Mar 4, May 6, Sep 2 and Nov 4.

### Public Holidays

No instruction on the following dates: Jan 1, Feb 19, Mar 29, Apr 1, May 20, Jul 1, Aug 5, Sep 2, 30, Oct 14, Nov 11.

Christmas & New Year: School is closed from Dec 23 to 27 2024, inclusive, and Jan 1 2025.

2025: School reopens on Jan 2.

www.global-edu.com.mx

## Junior Courses

Registration fee	175
English Programmes for ages 12-17 years <sup>1</sup> (Prices per person p/wk)	
English tuition only	440
Winter tuition, lunch + activities	910
Summer tuition, lunch + activities	970
English Programme+full board homestay in a twin room accommodation for ages 12-17 years <sup>1</sup>	
Winter	1270
Summer	1330
Health Insurance required (p/wk)	35
Airport transfer required one way	130
Custodianship service available (if requested by Canadian Embassy) <sup>1</sup>	70

<sup>1</sup> Compulsory fee for unaccompanied minors under 16.

Class size: Max 18 students.

Lesson duration: 50 min.

### Start dates (Homestay):

Every Monday from:

Winter 2024: Jan 8 to Jan 29 (course ends Feb 2, students depart Feb 3). GROUPS ONLY.

Summer 2024: Jun 24 to Aug 12 (course ends Aug 16, students depart Aug 17). GROUPS & INDIVIDUALS.

Winter 2025: Jan 6 to Feb 3 (course ends Feb 7, students depart Feb 8).

GROUPS ONLY.

### Additional course information

Standard timetable: Arrivals are on Sunday and departures are on Saturday. The maximum booking length for accommodation homestay is 4 weeks (27 nights) for individuals under 16 years old.

### Junior Courses for Groups

In addition to our published start dates, the school can accept groups for a variety of age ranges at various times throughout the year. Maximum class sizes for closed group, subject to negotiation. One group leader may accompany each group of 10-15 students for free (including transfers, accommodation and activities).



## Costo de Vida\*

\*El costo de vida es estimado y por decision del proveedor, puede variar sin previo aviso.

 1.5 CAD 2 litros de agua.	 3 CAD Barra de pan	 2 CAD 1 litro de leche	 6 CAD Cerveza	 2 CAD Refresco	 3 CAD Café
 8 CAD Menú hamburguesa.	 4 CAD Sandwich	 30 CAD Menú de dos platos.	 13 CAD Cine	 55 CAD Teatro	 13 CAD Entrada discoteca
 10 CAD Coste tarjeta SIM	 21 CAD Bono transporte semanal				

**GLOBAL Vancouver**  
806 Homer St., 2<sup>nd</sup> floor  
Vancouver, BC V6B 2W5  
Informes e inscripciones: +52 55 5401-5202  
info@global-edu.com.mx

